

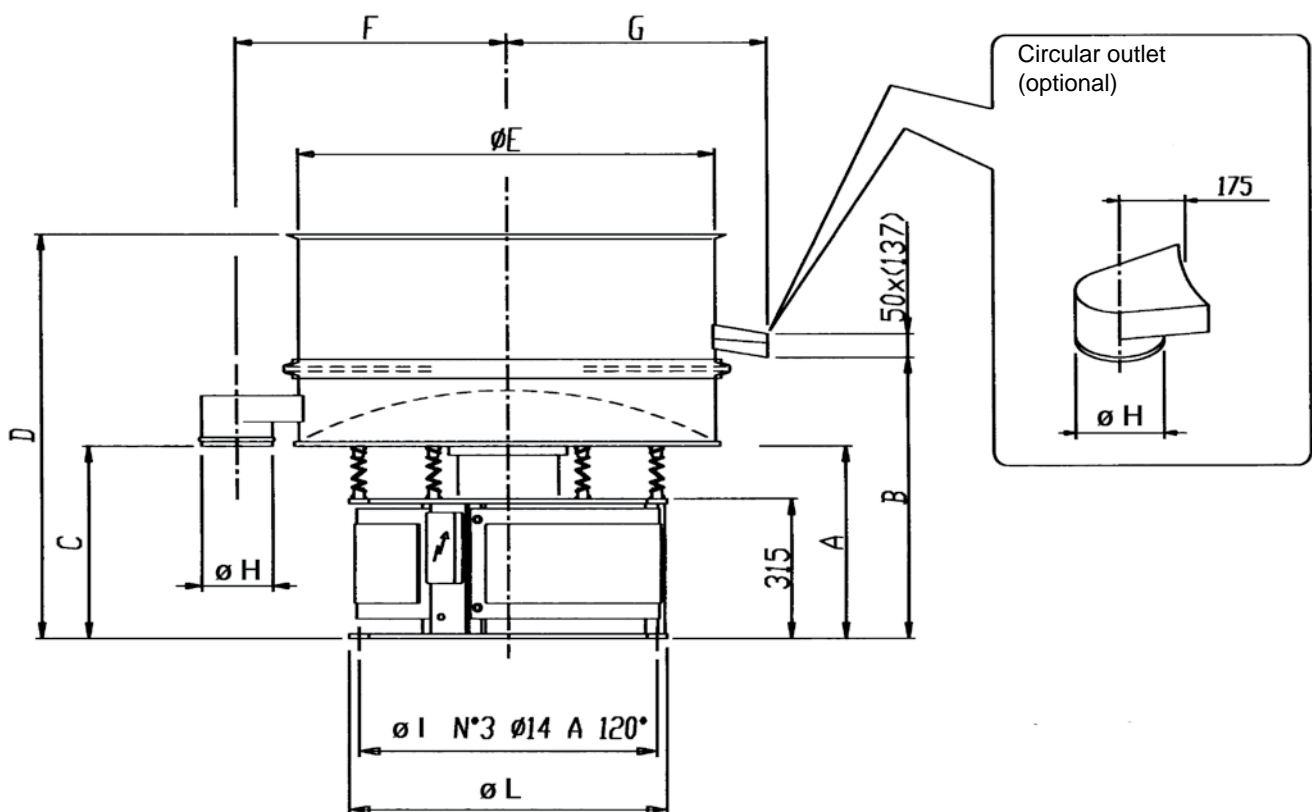


TECHNICAL FEATURES	900	1200	1500	2000
Electrical power (kW)	0,73	1,25	1,5	4,25
Centrifugal force (kg)	850	1750	2150	5500
Sieve decks	1	1	1	1
Mesh surface (m ²)	0,587	0,932	1,575	2,7
Weight (kg)	175	210	450	700

CONSTRUCTION FEATURES

- High splash-guard ring plate
- Parts in contact with the product made of AISI 304 stainless steel
- Base made of ABS
- Electrical motor vibrator, IP 65 insulation

Dimensions in mm



MODELS	A	B	C	D	E	F	G	H	I	L
900 - 1	433	633	433	913	950	615	595	160	680	725
1200 - 1	470	720	460	1047	1160	725	700	160	680	725
1500 - 1	488	770	508	1115	1500	923	870	200	870	915
2000 - 1	643	961	693	1307	1920	1200	1144	250	1215	1260

ADVANTAGES

- High efficiency due to high centrifugal force applied
- Fast waste discharge
- High reliability thanks to the resistant structure
- New motor vibrator with 2-year warranty

APPLICATIONS

- Slip screening after grinding

The data indicated here are purely indicative and can be modified by Gap Technology Ltd without any notice. Precise values are communicated upon request. Any unauthorised copy of this document will be legally pursued.

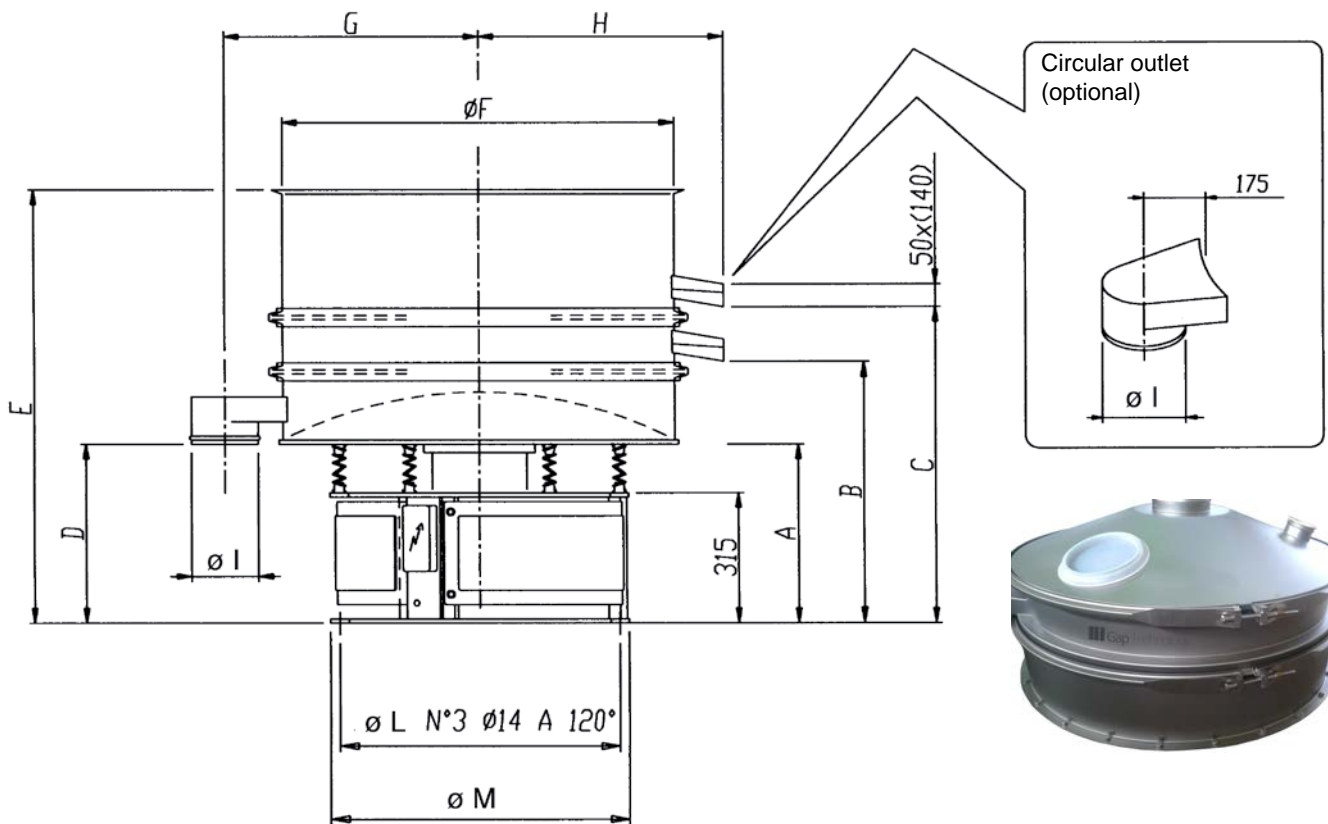


TECHNICAL FEATURES	900	1200	1500	2000
Electrical power (kW)	0,73	1,25	1,5	4,25
Centrifugal force (kg)	850	1750	2150	5500
Sieve decks	2	2	2	2
Mesh surface (m ²)	0,587+0,587	0,932+0,932	1,575+1,575	2,7+2,7
Weight (kg)	200	240	480	800

CONSTRUCTION FEATURES

- High splash-guard ring plate
- Parts in contact with the product made of AISI 304 stainless steel
- Base made of ABS
- Electrical motor vibrator, IP 65 insulation

Dimensions in mm



MODELS	A	B	C	D	E	F	G	H	I	L	M
900 - 2	433	633	763	433	1043	950	615	595	160	680	725
1200 - 2	470	720	855	475	1225	1166	700	700	160	680	725
1500 - 2	488	770	978	508	1315	1500	923	870	200	870	915
2000 - 2	643	961	1151	693	1497	1920	1200	1144	250	1215	1260

ADVANTAGES

- High efficiency due to high centrifugal force applied
- Fast waste discharge
- High reliability thanks to the resistant structure
- New motor vibrator with 2-year warranty

APPLICATIONS

- Slip screening after grinding

The data indicated here are purely indicative and can be modified by Gap Technology Ltd without any notice. Precise values are communicated upon request. Any unauthorised copy of this document will be legally pursued.